



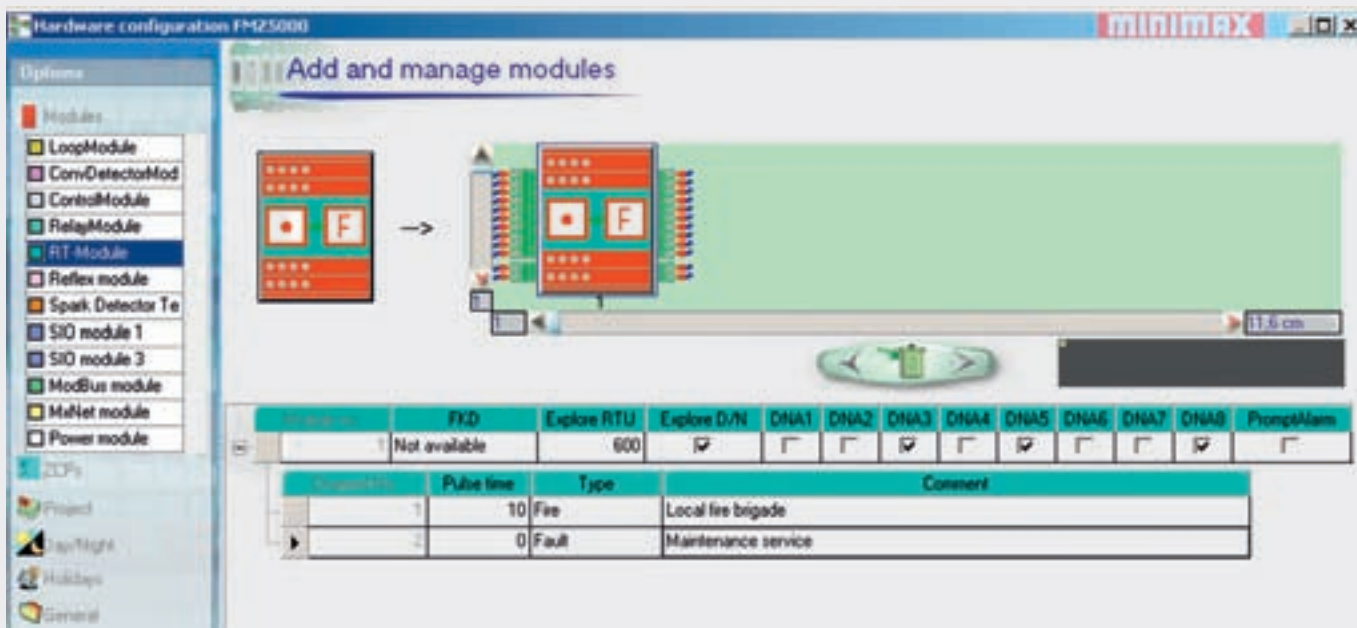
FMZ 5000 Remote transmission unit

*Cool down.
Fire Protection by*

MINIMAX

► Product ► Application + Advantages

- ▶ The remote transmission unit provides 2 outputs for activating remote transmission for fire and/or faults or for combinations of the two.
- ▶ For each remote transmission, the configuration determines whether the activation should be
 - continuous or
 - pulsed.
- ▶ Connections for a fire brigade control panel in accordance with DIN 14661 and a fire brigade key depot in accordance with VdS 2139 are provided. All functions of both devices are fully supported.
- ▶ For each alarm group, it is determined whether the remote transmission should be activated permanently, based on time periods or with an additional delay (explore) in the case of a fire alarm.
- ▶ You can define whether the explore function is deactivated automatically after a time or only manually.
- ▶ The requirements for the PM operating mode in accordance with DIN VDE 0833-2 for preventing false alarms are fully implemented.
- ▶ The remote transmission for faults also reports complete power outages.
- ▶ A fire brigade control panel in accordance with DIN 14661 can be connected via a 20-pin sheathed ribbon cable.
- + You can specify for each individual alarm group whether the fire brigade should be called or not.
- + For a very finely structured alarm organisation and optimum adaptation to your operational requirements, up to 8 freely definable time periods are available for each day of the week.
- + The configurable alarm organisation can therefore be fully adapted to your operational requirements. Adaptations to shift operations in various production areas are easy to implement.
- + SNAP AND GO! All you have to do is plug in the modules, with no wiring in the control panel, then connect the external devices.



Remote transmission for fire

Explore – 8 time periods per day, shift operation, holidays

Activate remote transmission, call fire brigade

Fire brigade control panel activation and operation

Key depot activation/monitoring

Remote transmission for fault

Activate remote transmission, notify service points

Fault is reported even in the case of a power outage

- ▶ The remote transmission unit has two independent controls for remote transmission (RT). Each output monitors the connected RT including the supply line for wire breakage and short circuits. They are connected directly by means of plug-in terminals on the module housing. A fire brigade control panel and key depot can easily be connected via a 20-pin ribbon cable and a plug contact.
- ▶ An RTU can be connected to the FMZ 5000 control panel on a TS35 mounting rail (top hat rail) in any module

position. The module is automatically connected with the power supply and the data bus by means of contacts on the bottom of the housing when they are pushed together. No wiring is required within the control panel for the module. The release voltage for both outputs is 24 Vdc.

- ▶ The module is configured via a computer with the configuration program MxSysCon. The configuration data is downloaded to the fire alarm panel via serial download.

Technical data

Operating/consumer voltage	24 Vdc (19V to 29V)
Current consumption	25 mA, no triggering active
Outputs	2 for remote transmission of fire/fault, 1 each for fire brigade control panel and key depot
Line monitoring	Monitoring for wire breakage and short circuits incl. the connected device
Load current (max.)	1A for each remote transmission
Operating temperature	-5 °C to +40 °C
Relative humidity	95 %, without dew
Dimensions	99 x 45 x 114.5 mm (L x W x H)
Article number	901969

We reserve the right to make technical changes.

Minimax GmbH & Co. KG
 Industriestrasse 10/12
 23840 Bad Oldesloe
 Germany
 Phone +49 4531 803-0
 Fax +49 4531 803-248
 E-mail info@minimax.de
 www.minimax.de

